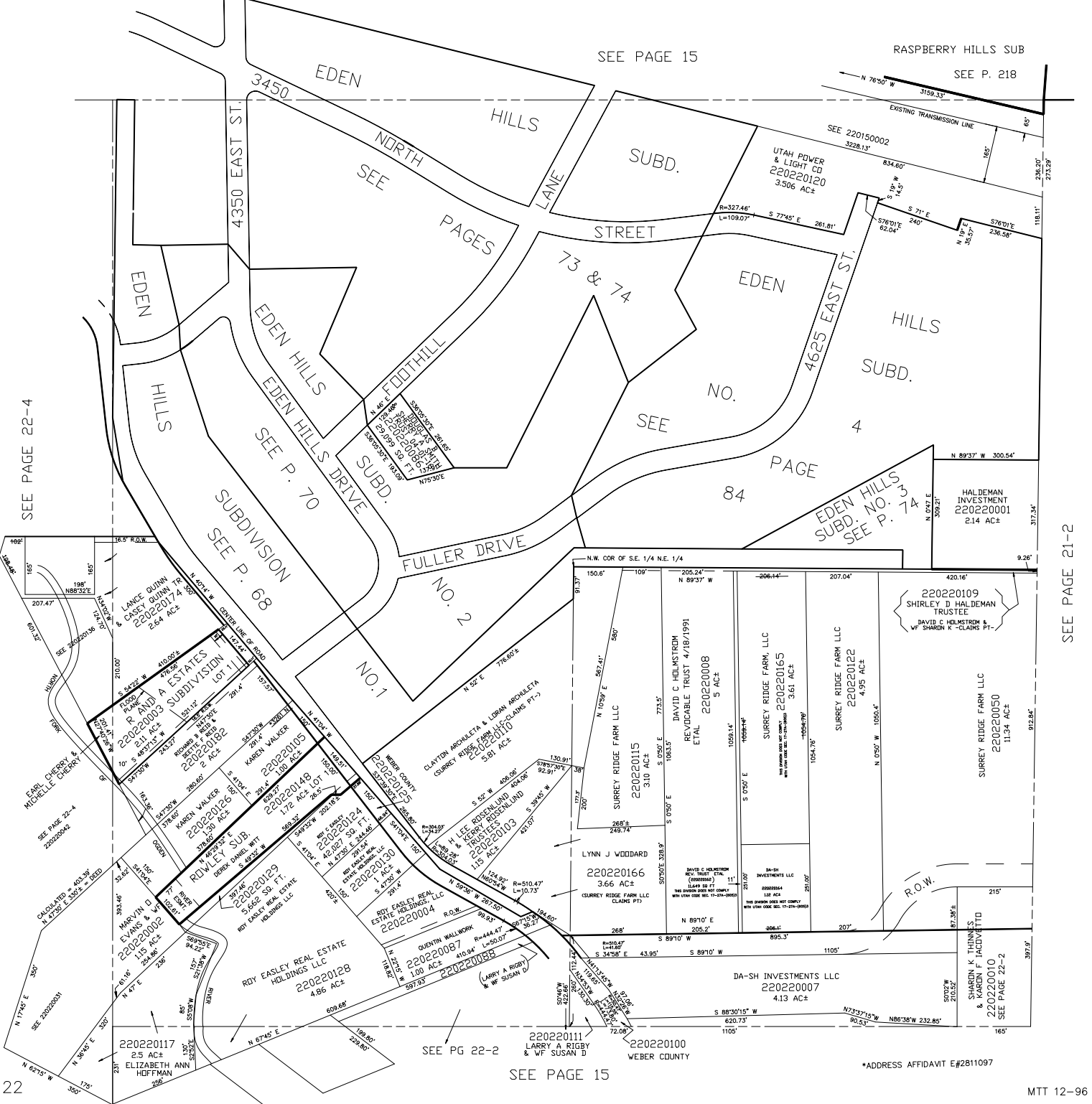


N.E. 1/4 OF SECTION 28, T.7N., R.1E., S.L.B. & M.

IN WEBER COUNTY  
SCALE 1" = 200'

TAXING UNIT: 28



SEE PAGE 22-4

SEE PAGE 15

RASPBERRY HILLS SUB  
SEE P. 218

SEE P. 70

SEE P. 68

SEE PAGE 21-2

SEE PG 22-2

SEE PAGE 15

\*ADDRESS AFFIDAVIT E#2811097